



FREE COMMUNITY ADVICE CLINICS 2020 Schedule

As a parent it can be hard to know what is "normal" speech and language development. That is where we can help! Come in and see us at one of our free 'drop-in' community advice clinics. Talk to one of our NZSTA registered Speech-Language Therapists about your child's speech and language development. We will guide you and your child to the right help and support - if it is required.



At GIANT LEAPS Speech therapy, we provide the highest standard of assessment, diagnosis and treatment for childhood communication difficulties. Our interventions are current and evidence based. We are passionate about all aspects of speech, language and literacy development. What we are most passionate about, is every child achieving their social and communication potential.

ADVICE CLINIC schedule 2020

TIMARU / Giant Leaps Clinic (2-4pm) FRIDAY

7 February, 1 May, 24 July, 16 October.

GERALDINE / Geraldine Resource Centre (1.30-3pm) TUESDAY

7 February, 1 May, 20 October.

OAMARU / Plunket Rooms (2-4pm) FRIDAY

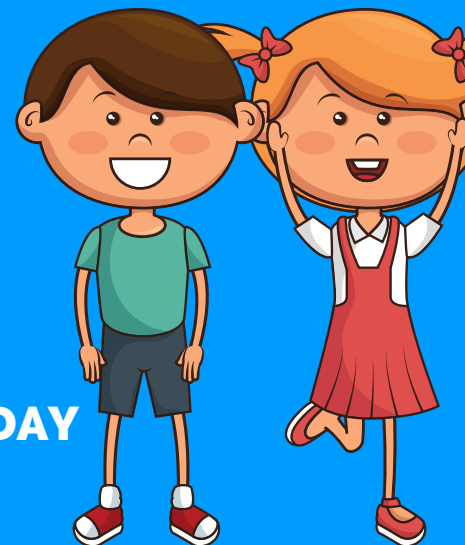
7 February, 1 May, 24 July, 16 October.

TEMUKA / Plunket Rooms (12-1pm) TUESDAY

7 February, 1 May, 28 July, 20 October.

WAIMATAE / Parenting Hub (12-1pm) THURSDAY

7 February, 1 May, 24 September.



**REMEMBER.... the best
intervention is early intervention!**

